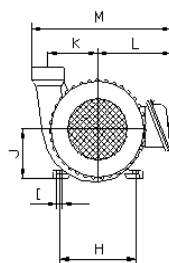
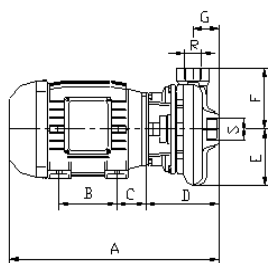
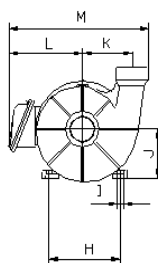
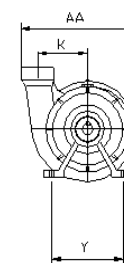
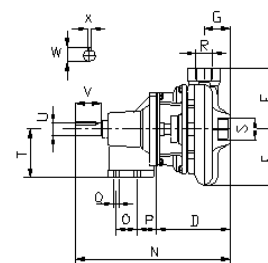
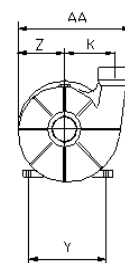


BPI-23

Bocais Roscados



Mancalzas

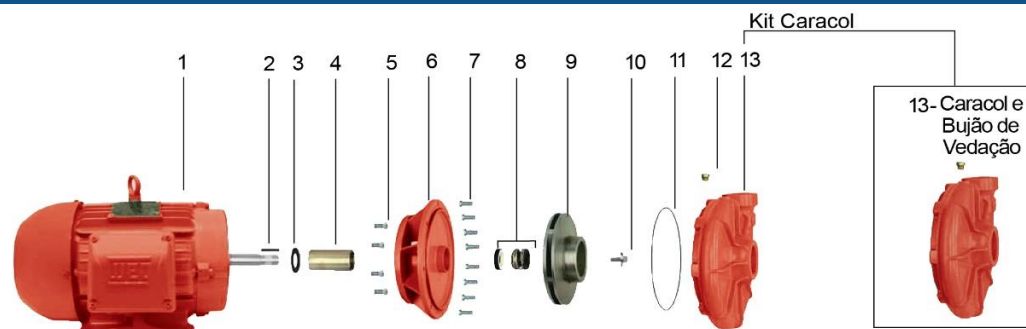


DIMENSÕES EM MILÍMETROS (mm) - 60 Hz

Descrição Potência Referência	BPI-23 R 1 1/4						BPI-23 R 1 1/2					
	12,5 cv		15 cv		20 cv	25 cv	30 cv	15 cv		20 cv	25 cv	30 cv
	Trif.	Mono.	Trif.	Mono.	Trif.	Trif.	Trif.	Trif.	Mono.	Trif.	Trif.	Trif.
A	588	588	588	608	683	683	702	588	608	683	683	702
B	178	178	178	178	210	210	254	178	178	210	210	254
C	89	89	89	83	108	108	102	89	83	108	108	102
D	178	178	178	178	178	178	178	178	178	178	178	178
E	165	165	165	165	165	165	165	170	170	170	170	170
F	155	155	155	155	155	155	155	155	155	155	155	155
G	61	61	61	61	61	61	61	66	66	66	66	66
H	216	216	216	216	254	254	254	216	216	254	254	254
I	12	12	12	12	15	15	15	12	12	15	15	15
J	132	132	132	132	160	160	160	132	132	160	160	160
K	151	151	151	151	151	151	151	151	151	151	151	151
L	218	205	218	205	264	264	264	218	205	264	264	264
M	396	394	396	394	441	441	439	396	394	441	441	439
M1	-	-	-	-	-	-	-	-	-	-	-	-
N	370	370	370	370	370	370	370	370	370	370	370	370
O	62	62	62	62	62	62	62	62	62	62	62	62
P	33	33	33	33	33	33	33	33	33	33	33	33
Q	11	11	11	11	11	11	11	11	11	11	11	11
R ("BSP)	1 1/4	1 1/4	1 1/4	1 1/4	1 1/4	1 1/4	1 1/4	1 1/2	1 1/2	1 1/2	1 1/2	1 1/2
S ("BSP)	2	2	2	2	2	2	2	2 1/2	2 1/2	2 1/2	2 1/2	2 1/2
T	100	100	100	100	100	100	100	100	100	100	100	100
U	28	28	28	28	28	28	28	28	28	28	28	28
V	60	60	60	60	60	60	60	60	60	60	60	60
W	32	32	32	32	32	32	32	32	32	32	32	32
X	8	8	8	8	8	8	8	8	8	8	8	8
Y	136	136	136	136	136	136	136	136	136	136	136	136
Z	151	151	151	151	151	151	151	151	151	151	151	151
AA	340	340	340	340	340	340	340	340	340	340	340	340
AA1	-	-	-	-	-	-	-	-	-	-	-	-
AB-R	-	-	-	-	-	-	-	-	-	-	-	-
AC-R	-	-	-	-	-	-	-	-	-	-	-	-
AD-R	-	-	-	-	-	-	-	-	-	-	-	-
AB-S	-	-	-	-	-	-	-	-	-	-	-	-
AC-S	-	-	-	-	-	-	-	-	-	-	-	-
AD-S	-	-	-	-	-	-	-	-	-	-	-	-
Peso Motobomba (kg)	95,2	106	99,7	116	131	138	155	98,3	114	133	140	156
Peso Mancalzada (kg)	34,4	34,4	35,0	35,0	32,9	33,1	34,1	33,6	33,6	34,5	35,2	35,6

Obs.: - As informações poderão sofrer alterações sem prévio aviso, de acordo com a evolução tecnológica.
- A utilização de motores diferentes do padrão de linha alteram as características de desempenho do conjunto.

BPI-23



Item	Descrição	Comp. do Kit	Quant. de peças no produto	Quant. de peças contidas em cada caixa do kit	BPI-23 R 1 1/4					BPI-23 R 1 1/2				
					12,5 cv	15 cv	20 cv	25 cv	30 cv	15 cv	20 cv	25 cv	30 cv	
1	Motor IP-55, 2 polos, 60 Hz	-	1	-										
2	Chaveta do rotor	-	1	-	8720055101A	8720055101A	8720055101A	8720055101A	8720055101A	8720055101A	8720055101A	8720055101A	8720055101A	
3	Anel de respingo	-	1	-	8720014104A	8720014104A	8720014104A	8720014104A	8720014104A	8720014104A	8720014104A	8720014104A	8720014104A	
4	Bucha do selo	-	1	-	8723016101A	8723016101A	8723016101A	8723016101A	8723016101A	8723016101A	8723016101A	8723016101A	8723016101A	
*5	Kit paraf. SZ.NC. 1/2" x 1"	-	4	4	8720130101A	8720130101A	8720130101A	8720130101A	8720130101A	8720130101A	8720130101A	8720130101A	8720130101A	
*6	Intermediário Verm	-	1	-	8701236602A	8701236602A	8701236602A	8701236602A	8701236602A	8701236602A	8701236602A	8701236602A	8701236602A	
7	Kit paraf. SZ.NC. 3/8" x 1"	-	8	4	8720130109A	8720130109A	8720130109A	8720130109A	8720130109A	8720130109A	8720130109A	8720130109A	8720130109A	
8	Selo mecânico 1 1/4" T21 BUNA	-	1	-	8720181101A	8720181101A	8720181101A	8720181101A	8720181101A	8720181101A	8720181101A	8720181101A	8720181101A	
9	Rotor	-	1	-	8701483152A	8701483153A	8701483156A	8701200154A	8701200157A	-	-	-	-	
		-	1	-	-	-	-	-	-	8701484152A	8701484154A	8701199153A	8701199156A	
10	Paraf. S.NC. 3/8" x 3/4" Flang.	-	1	-	8720131101A	8720131101A	8720131101A	8720131101A	8720131101A	8720131101A	8720131101A	8720131101A	8720131101A	
11	O-ring 2274	-	1	-	8720114125A	8720114125A	8720114125A	8720114125A	8720114125A	8720114125A	8720114125A	8720114125A	8720114125A	
12	Bujão de vedação 1/4" GAS	-	1	-	8720037101A	8720037101A	8720037101A	8720037101A	8720037101A	8720037101A	8720037101A	8720037101A	8720037101A	
13	Kit caracol BPI-23 R 1 1/4 Verm	Caracol e Bujão ved. 1/4" GAS	1	1	8700117602A	8700117602A	8700117602A	8700117602A	8700117602A	-	-	-	-	
	Kit caracol BPI-23 R 1 1/2 Verm		1	1	-	-	-	-	-	8700116602A	8700116602A	8700116602A	8700116602A	
	Kit mancal MG 100FC149 JM108 Verm				8730501122A	8730501122A	8730501122A	8730501122A	8730501122A	8730501122A	8730501122A	8730501122A	8730501122A	
Diâmetro do rotor (mm)					197	208	228	245	250	193	209	225	240	

* Para bombas Mancalizadas, substituir item 5 (código 8720130101A) pelo código 8720130111A e item 6 (código 8701236602A) pelo código 8701235602A.

Opções

8	Selo mec. 1 1/4" T21 VITON	-	1	-	8720181107A	8720181107A	8720181107A	8720181107A	8720181107A	8720181107A	8720181107A	8720181107A	8720181107A
	Selo mec. 1 1/4" T21 EPDM	-	1	-	8720181106A	8720181106A	8720181106A	8720181106A	8720181106A	8720181106A	8720181106A	8720181106A	8720181106A
	Selo mec. 1 1/4" T21 SIC-EPDM	-	1	-	8720181103A	8720181103A	8720181103A	8720181103A	8720181103A	8720181103A	8720181103A	8720181103A	8720181103A
	Selo mec. 1 1/4" T21 SIC-VITON	-	1	-	8720181105A	8720181105A	8720181105A	8720181105A	8720181105A	8720181105A	8720181105A	8720181105A	8720181105A