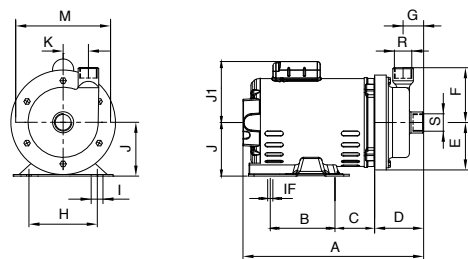


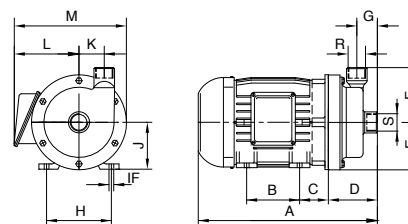


**MCI-RE**

**MOTOBOMBA IP-21**



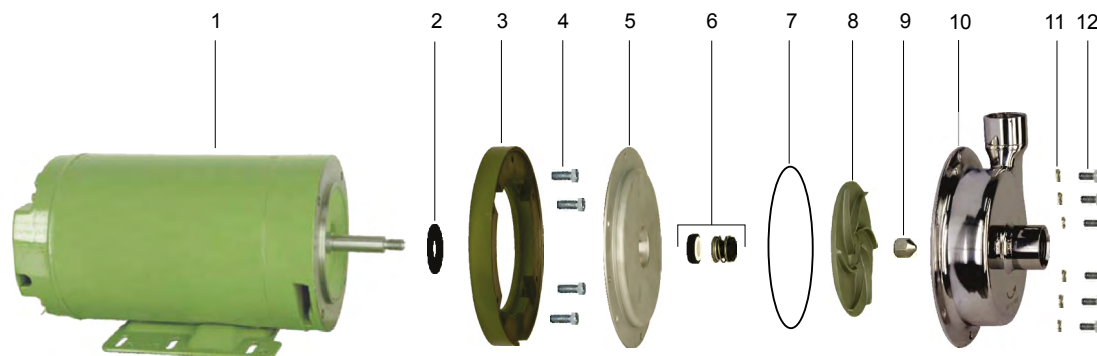
**MOTOBOMBA IP-55**



**DIMENSÕES EM MILÍMETROS (mm) - 60 Hz**

Descrição	MCI-RE (Motor IP-21)				MCI-RQ (Motor IP-55)			
	1/2 cv	3/4 cv	1 cv	1,5 cv	1/2 cv	3/4 cv	1 cv	1,5 cv
Potência	Trif.	Trif.	Trif.	Trif.	Trif.	Trif.	Trif.	Trif.
Referência	Trif.	Trif.	Trif.	Trif.	Trif.	Trif.	Trif.	Trif.
A	334	354	328	358	311	311	311	328
B	76	76	76	76	90	90	90	100
C	65	65	65	65	45	45	45	50
D	93	93	93	93	93	93	93	93
E	90	90	90	90	90	90	90	90
F	104	104	104	104	104	104	104	104
G	39	39	39	39	39	39	39	39
H	124	124	124	124	112	112	112	125
I	31	31	31	31	-	-	-	-
IF	9	9	9	9	7	7	7	10
J	89	89	89	89	71	71	71	80
J1	-	-	-	-	-	-	-	-
K	48	48	48	48	48	48	48	48
L	83	83	83	83	130	130	130	139
M	180	180	180	180	204	204	204	228
N	250	250	250	250	250	250	250	250
P	40	40	40	40	40	40	40	40
Q	9	9	9	9	9	9	9	9
R ("BSP)	1	1	1	1	1	1	1	1
S ("BSP)	1	1	1	1	1	1	1	1
T	89	89	89	89	89	89	89	89
U	15,8	15,8	15,8	15,8	15,8	15,8	15,8	15,8
V	48	48	48	48	48	48	48	48
W	18	18	18	18	18	18	18	18
X	4,76	4,76	4,76	4,76	4,76	4,76	4,76	4,76
Y	123	123	123	123	123	123	123	123
AA	180	180	180	180	180	180	180	180
<b>Peso Motobomba (kg)</b>	<b>13,8</b>	<b>14,7</b>	<b>16,0</b>	<b>16,9</b>	<b>14,3</b>	<b>15,6</b>	<b>15,6</b>	<b>18,6</b>

MCI-RE



Item	Descrição	Quant. de peças utilizadas no produto	Quant. de peças contidas em cada caixa do kit	MCI-RE			
				1/2 cv	3/4 cv	1cv	1,5 cv
1	Motor elétrico, 2 polos, 60 Hz	1	-	1/2 cv	3/4 cv	1cv	1,5 cv
2	Anel de respingo	1	-	8720014103A	8720014103A	8720014103A	8720014103A
3	Disco intermediário	1	-	8701392151A	8701392151A	8701392151A	8701392151A
4	Kit paraf. SZ.NC. 3/8" x 3/4"	4	4	8720130114A	8720130114A	8720130114A	8720130114A
5	Tampa traseira	1	-	8720186101A	8720186101A	8720186101A	8720186101A
6	Selo mecânico 5/8" T21	1	-	8720173101A	8720173101A	8720173101A	8720173101A
7	O-ring 2250 126.59X3.53mm	1	-	8720114119A	8720114119A	8720114119A	8720114119A
8	Rotor	1	-	8720164105A	8720164101A	8720164103A	8720164104A
9	Contraporca	1	-	8720060102A	8720060102A	8720060102A	8720060102A
10	Corpo	1	-	8720062101A	8720062101A	8720062101A	8720062101A
11	Arruela de pressão 1/4" INOX	6	6	8720022101A	8720022101A	8720022101A	8720022101A
12	Kit paraf. S.NC. 1/4" 5/8 INOX	6	3	8720133106A	8720133106A	8720133106A	8720133106A
	Kit mancal MG JPL R INOX-316			8730501102A	8730501102A	8730501102A	8730501102A
	Diâmetro do rotor (mm)			90	100	110	120

Opções							
6	Selo mecânico 5/8 T21 EP	1	-	8720173107A	8720173107A	8720173107A	8720173107A
	Selo Mecânico 5/8 T21 VT IN316			8720173111A	8720173111A	8720173111A	8720173111A
	Selo Mecânico SM 5/8 T21 SE			8720173104A	8720173104A	8720173104A	8720173104A
	Selo mecânico 5/8 T21 SV IN 316	1	-	8720173106A	8720173106A	8720173106A	8720173106A
7	O-ring 2250 126.59X3.53mm VT	1	-	8720122108A	8720122108A	8720122108A	8720122108A
	O-ring 2250 126.59X3.53mm EP	1	-	8720118103A	8720118103A	8720118103A	8720118103A