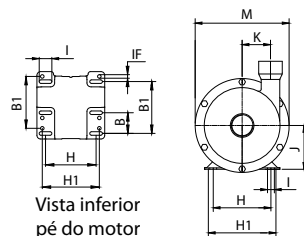
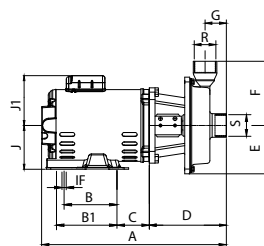


MCI-RQ

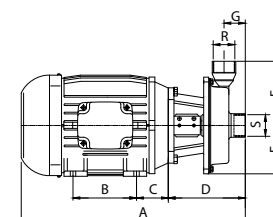
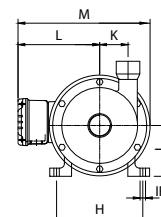
MOTOBOMBA IP-21



Vista inferior
pé do motor



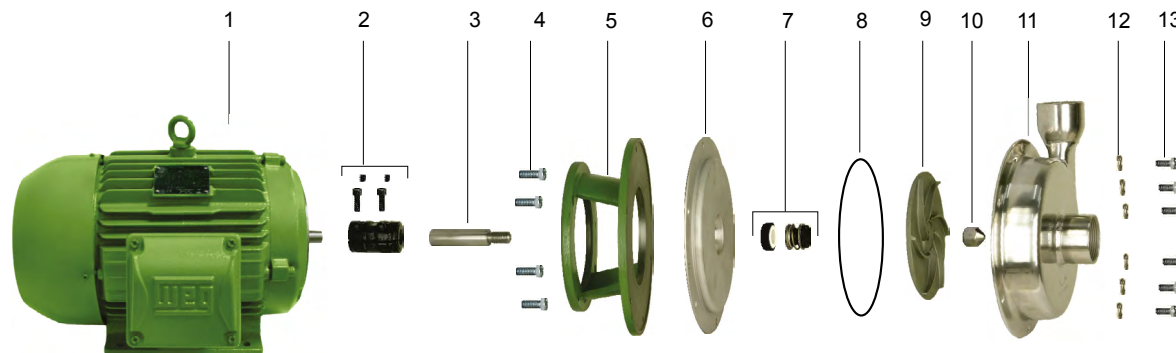
MOTOBOMBA IP-55



DIMENSÕES EM MILÍMETROS (mm) - 60 Hz

Descrição	MCI-RQ (Motor IP-21)		MCI-RQ (Motor IP-55)					
	2 cv	3 cv	2 cv	3 cv	4 cv	5 cv	7,5 cv	
Potência	2 cv	3 cv	2 cv	3 cv	4 cv	5 cv	7,5 cv	
Referência	Trif.	Trif.	Trif.	Trif.	Trif.	Trif.	Trif.	
A	435	465	428	456	470	486	506	
B	76	76	100	100	125	140	140	
B1	-	127	-	-	-	-	-	
C	65	65	50	56	56	63	70	
D	170	170	170	170	170	170	170	
E	106	106	106	106	106	106	106	
F	142	142	142	142	142	142	142	
G	47	47	47	47	47	47	47	
H	124	124	125	140	140	160	190	
H1	-	140	-	-	-	-	-	
I	31	31	-	-	-	-	-	
IF	8,7	8,7	10	10	10	12	12	
J	89	89	80	90	90	100	112	
J1	83	83	-	-	-	-	-	
K	62	62	62	62	62	62	62	
L	-	-	157	157	157	167	192	
M	212	212	228	245	237	264	291	
N	362	362	362	362	362	362	362	
O	62	62	62	62	62	62	62	
P	33	33	33	33	33	33	33	
Q	11	11	11	11	11	11	11	
R ("BSP)	11/2	11/2	11/2	11/2	11/2	11/2	11/2	
S ("BSP)	11/2	11/2	11/2	11/2	11/2	11/2	11/2	
T	100	100	100	100	100	100	100	
U	28	28	28	28	28	28	28	
V	60	60	60	60	60	60	60	
W	32	32	32	32	32	32	32	
X	8	8	8	8	8	8	8	
Y	136	136	136	136	136	136	136	
AA	212	212	212	212	212	212	212	
Peso Motobomba (kg)	21,5	24,1	21,6	26,3	29,5	38,3	47,6	

MCI-RQ



Item	Descrição	Composição do kit	Quant. de peças utilizadas no produto	Quant. de peças contidas em cada caixa do kit	MCI-RQ				
					2 cv	3 cv	4 cv	5 cv	7,5 cv
1	Motor elétrico, 2 polos, 60 Hz	-	1	-					
* 2	Kit acoplamento	Parafuso TSC.NC. 5/16" x 3/8" Parafuso TCC.NC. 5/16" x 7/8" Acoplamento eixo ME	2 2 1	2 2 1	8730505103A	8730505103A	8730505102A	8730505102A	8730505102A
3	Ponta de eixo	-	1	-	8723056102A	8723056102A	8723056102A	8723056102A	8723056102A
4	Kit paraf. SZ.NC. 3/8" x 1"	-	4	4	8720130109A	8720130109A	8720130109A	8720130109A	8720130109A
5	Intermediário	-	1	-	8701428151A	8701428151A	8701428151A	8701428151A	8701428151A
6	Tampa traseira	-	1	-	8720186102A	8720186102A	8720186102A	8720186102A	8720186102A
7	SM 3/4 T21 BUNA	-	1	-	8720178101A	8720178101A	8720178101A	8720178101A	8720178101A
8	O-ring 2362 158.12X5.33	-	1	-	8720115103A	8720115103A	8720115103A	8720115103A	8720115103A
9	Rotor InOX	-	1	-	8720165102A	8720165103A	8720165104A	8720165105A	8720165106A
10	Contraporca	-	1	-	8720060101A	8720060101A	8720060101A	8720060101A	8720060101A
11	Corpo MCI-RQ IN 1 1/2	-	1	-	8720062103A	8720062103A	8720062103A	8720062103A	8720062103A
12	Arruela de pressão 1/4" INOX	-	6	6	8720022101A	8720022101A	8720022101A	8720022101A	8720022101A
13	Kit paraf..S.NC. 1/4X5/8 IN	-	6	3	8720133107A	8720133107A	8720133107A	8720133107A	8720133107A
	Kit mancal MG 100FC149-19	-			8730501109A	8730501109A	8730501109A	8730501109A	8730501109A
	Diâmetro do rotor (mm)				112	120	129	135	150

* Para bombas com motor NEMA (IP-21) 4 a 7,5 cv, substituir item 2 (código kit) pelo código kit 8730505103A

Opções

*2	Kit acoplamento	-	1	-	8730505103A	8730505103A	8730505103A	8730505103A	8730505103A
7	SM 3/4 T21 VT	-	1	-	8720178108A	8720178108A	8720178108A	8720178108A	8720178108A
	SM 3/4 T21 SE	-	1	-	8720178103A	8720178103A	8720178103A	8720178103A	8720178103A
	SM 3/4 T21 SV	-	1	-	8720178104A	8720178104A	8720178104A	8720178104A	8720178104A
	SM 3/4 T21 EP	-	1	-	8720178105A	8720178105A	8720178105A	8720178105A	8720178105A
8	O-ring 2362 158.12X5.33 mm VT	-	1	-	8720123102A	8720123102A	8720123102A	8720123102A	8720123102A
	O-ring 2362 158.12X5.33 mm EP	-	1	-	8720119102A	8720119102A	8720119102A	8720119102A	8720119102A