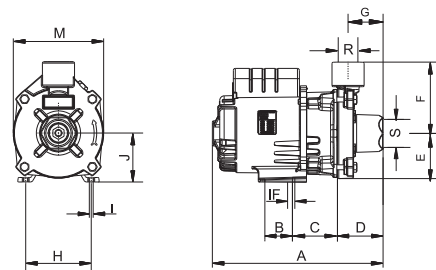


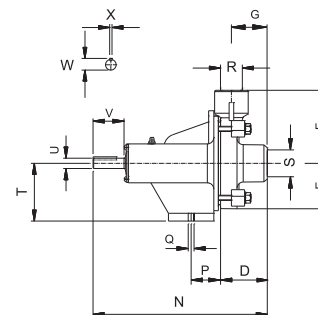


## BC-91 S

MOTOBOMBA



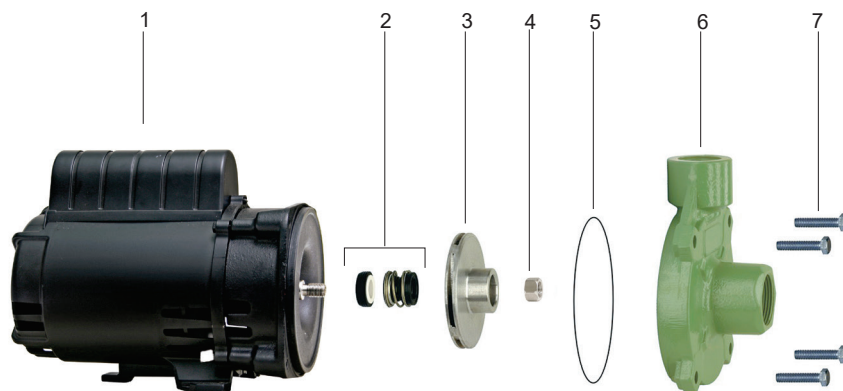
BOMBA MANCALIZADA



DIMENSÕES EM MILÍMETROS (mm) - 60 Hz

Descrição Potência Referência	BC-91 S									
	1/6 cv Mono.	1/4 cv Mono.	1/3 cv		1/2 cv		3/4 cv		1 cv	
			Trif.	Mono.	Trif.	Mono.	Trif.	Mono.	Trif.	Mono.
A	265	265	307	265	307	307	307	307	307	307
B	50	50	-	50	-	-	-	-	-	-
C	68	68	68	63	63	63	63	63	63	63
D	71	71	71	71	71	71	71	71	71	71
E	70	70	70	70	70	70	70	70	70	70
F	111	111	111	111	111	111	111	111	111	111
G	55	55	55	55	55	55	55	55	55	55
H	102	102	102	102	102	102	102	102	102	102
I	6	6	6	6	6	6	6	6	6	6
IF	10	10	10	10	10	10	10	10	10	10
J	76	76	76	76	76	76	76	89	76	89
M	140	140	140	140	140	140	140	140	140	140
N	268	268	268	268	268	268	268	268	268	268
P	43	43	43	43	43	43	43	43	43	43
Q	9	9	9	9	9	9	9	9	9	9
R ("BSP)	1	1	1	1	1	1	1	1	1	1
S ("BSP)	1 1/4	1 1/4	1 1/4	1 1/4	1 1/4	1 1/4	1 1/4	1 1/4	1 1/4	1 1/4
T	89	89	89	89	89	89	89	89	89	89
U	15,8	15,8	15,8	15,8	15,8	15,8	15,8	15,8	15,8	15,8
V	48	48	48	48	48	48	48	48	48	48
W	18	18	18	18	18	18	18	18	18	18
X	4,76	4,76	4,76	4,76	4,76	4,76	4,76	4,76	4,76	4,76
Y	123	123	123	123	123	123	123	123	123	123
AA	152	152	152	152	152	152	152	152	152	152
<b>Peso Motobomba (kg)</b>	<b>10,3</b>	<b>11,3</b>	<b>12,5</b>	<b>12,1</b>	<b>13,6</b>	<b>12,1</b>	<b>13,9</b>	<b>13,3</b>	<b>14,3</b>	<b>15,2</b>
<b>Peso Bomba Mancalizada (kg)</b>	<b>7,0</b>	<b>7,5</b>	<b>7,5</b>	<b>7,5</b>	<b>7,5</b>	<b>7,5</b>	<b>7,5</b>	<b>7,5</b>	<b>7,5</b>	<b>7,5</b>

BC-91 S



Item	Descrição	Composição do Kit	Quant. de peças utilizadas no produto	Quant. de peças contidas em cada caixa do kit	BC-91 S						
					1/6 cv	1/4 cv	1/3 cv	1/2 cv	3/4 cv	1 cv	
1	Motor elétrico IP-21, 2 polos, 60 Hz	-	1	-							
2	Selo mecânico 5/8" IP06 BUNA	-	1	-	8720174101A	8720174101A	8720174101A	8720174101A	8720174101A	8720174101A	
3	Rotor	-	1	-	10000018559A	10000018573A	8701340201A	8701110201A	-	-	
		-	1	-	-	-	-	-	8701341201A	8701111202A	
*4	Porca NF. 7/16" LATAO	-	1	-	8720151101A	8720151101A	8720151101A	8720151101A	8720151101A	8720151101A	
5	Kit o-ring 2049	-	1	5	8720112109A	8720112109A	8720112109A	8720112109A	8720112109A	8720112109A	
6	Caracol	-	1	1	8700119501A	8700119501A	8700119501A	8700119501A	8700119501A	8700119501A	
7	Kit paraf. SZ.NC.5/16X1 1/2	-	4	5	8720130115A	8720130115A	8720130115A	8720130115A	8720130115A	8720130115A	
**	Kit mancal MG 42BDS	-			8730501105A	8730501105A	8730501105A	8730501105A	8730501105A	8730501105A	
<b>Diâmetro do rotor (mm)</b>					<b>83</b>	<b>92</b>	<b>97</b>	<b>111</b>	<b>120</b>	<b>123</b>	

\* Item usado somente em motobombas trifásicas e mancalizadas.

Opções											
2	Selo mecânico 5/8" IP06 EPDM	-	1	-	8720174102A	8720174102A	8720174102A	8720174102A	8720174102A	8720174102A	
	Selo mecânico 5/8" IP06 VITON	-	1	-	8720174103A	8720174103A	8720174103A	8720174103A	8720174103A	8720174103A	
3	Rotor BR	-	1	-	10000018560A	10000018574A	8701340301A	8701110301A	8701341301A	8701111301A	
<b>Diâmetro do rotor (mm)</b>					<b>86</b>	<b>95</b>	<b>97</b>	<b>111</b>	<b>120</b>	<b>123</b>	